



Fire Your Imagination

Riva Vision

Electric Range



Instructions for Use, Installation & Servicing

For use in GB & IE (Great Britain & Republic of Ireland).



IMPORTANT

THE OUTER CASING, FRONT AND GLASS PANEL BECOME EXTREMELY HOT DURING OPERATION AND WILL RESULT IN SERIOUS INJURY AND BURNS IF TOUCHED. IT IS THEREFORE RECOMMENDED THAT A FIREGUARD COMPLYING WITH BS 8423:2002 IS USED IN THE PRESENCE OF YOUNG CHILDREN, THE ELDERLY OR INFIRM.

For use with 230v 50Hz electricity supply only.

Please read these instructions carefully before installation and keep them in a safe place.

They will be needed when maintenance or servicing is required.

THIS APPLIANCE MUST BE EARTHED

Contents

Covering the following models:

Riva Vision Small	Riva Vision Midi	Riva Vision Medium
634-680	634-733	634-795

User Instructions.....3

1. Important Information & Health and Safety..... 3

2. Operating Instructions 3

3. Maintenance..... 5

4. Cleaning the Appliance 5

5. Removal of the Fuel Bed 6

Installation Instructions.....7

Technical Specifications 7

Appliance Dimensions..... 7

Installation.....8

1. General..... 8

2. Fitting the Appliance..... 8

3. Fitting the Top Plate 8

Servicing9

1. Fault Finding..... 9

2. How to Wire a Plug 9

3. Servicing Requirements 10

4. Removal of the Engine..... 10

5. Removal of the Fuel Bed 11

6. Replacing the Front LED Board 11

7. Replacing the Printed Circuit..... 11

8. Replacing the Motor & Effects Unit..... 11

9. Replacing the Middle LED Board..... 12

10. Replacing the Rear LED Board..... 12

11. Replacing the Heater Assembly 12

Spare Parts List.....13



To receive your Extended Warranty your Gazco appliance must have been purchased from our Expert Retailer Network and registered within one month of purchase or installation. Please note that all warranties are effective from the date of purchase. Any Gazco product purchased outside of our Extended Retailer Network, or not registered within the stated time will carry a standard 12 month warranty.

Full terms and conditions are detailed in the Warranty Statement on the Gazco website www.gazco.com. In the event of any conflict of information the wording on the website shall prevail.

Important Note: Should any problems be experienced with your product, claims must first be submitted to the Expert Retailer where the appliance was purchased from who will offer immediate assistance or contact Gazco on your behalf.


Registration No WEE/DH1656ZW
In accordance with European Directive 2002/96/EC, waste electrical and electronic equipment (WEEE) must not be disposed of with household waste.



At the end of its useful life please take this product to an appropriate recycling centre or collection point. You can find your nearest recycling centre by using the bank locator at www.recycle-more.co.uk for UK customers, www.weeeireland.ie for customers in the Republic of Ireland, or by contacting your local authority.

User Instructions

1. Important Information and Health and Safety

- 1.1 **Read all of the instructions carefully before using the appliance.**
- 1.2 **Remove all packaging and dispose of at an appropriate recycling facility.**
- 1.3 Do not locate this appliance immediately below a fixed socket outlet.
- 1.4 The outer casing of this appliance is considered by the manufacturer to be a working surface which becomes hot when the fire is switched on. You must use a suitable fire guard to protect children, the elderly and the infirm.
- 1.5 Do not use this appliance in the immediate surroundings of a bath, shower, swimming pool or any other area where the appliance could come into contact with water or humidity, e.g. a bathroom.
- 1.6  **WARNING! DO NOT COVER**
Do not allow the appliance to be covered or let the air inlet/outlet become obstructed as the appliance may overheat. Please note the warning symbol on the appliance (see above).
- 1.7 **For indoor use only.** This appliance is not suitable for use outside the house.
- 1.8 Keep the power cord away from hot surfaces and hot conditions. Do not route the power lead in front of the appliance.
- 1.9 This appliance must stand on a clean, level, firm surface. Do not stand the fire on a carpet. Ensure that furniture, curtains etc. are positioned no closer than 1m and the fire stands on a surface that can withstand temperatures of 90°C for prolonged periods. Do not allow rugs to be placed within 500mm of the front of the appliance.
- 1.10 When the fire has been installed, the position of the plug must be accessible.
- 1.11 Where the electricity supply cable has to pass through a fire place, stone surround etc. ensure suitable rubber bushes are fitted at possible wear points.
- 1.12 If installed in an open fireplace, blank off the chimney to reduce the risk of a back draught which can cause the safety cut-out to operate.
- 1.13 If the electricity supply cable is damaged do not use the appliance until it has been replaced. For safety reasons the replacement has to be carried out by Gazco, a Gazco service agent or a similarly competent electrician.
- 1.14 Do not use this appliance with any kind of timer, programmer or thermal control or other device that will switch the appliance on or off automatically.
- 1.15 Do not operate the appliance if it is damaged.

- 1.16 Repairs of electrical appliances must only be performed by an electrical engineer. Should the appliance fail to operate, or in case of any damage, please contact the retailer from whom the appliance was purchased.
- 1.17 **Never leave the heater unattended while it is in use.** Always switch the product to the OFF position and unplug it from the electrical outlet when not in use.
- 1.18 **This appliance is not intended to be used by persons under the age of 12, persons with reduced physical, sensory or mental capabilities or persons with lack of experience and knowledge in the safe operation of the appliance.**
The appliance may be operated by persons above the age of 12 provided they have been instructed in the safe use of the appliance and that they understand the hazards involved. Persons above the age of 12 may also operate the appliance under the supervision of a responsible adult.
- 1.19 Parts of this appliance become hot whilst in operation and under no circumstances should persons under the age of 12 be left alone with the product when it is in operation unless a suitable fireguard is used to protect them against the possibility of coming into direct contact with the appliance.

2. Operating Instructions



WARNING! Do not operate the appliance if it is damaged or has malfunctioned. If you suspect the appliance is damaged or has malfunctioned call a qualified service engineer to inspect the appliance, and replace any part of the electrical system if necessary, before reuse.

GENERAL

- 2.1 The appliance can be operated by the infrared handset or the manual controls which are on the right hand side of the outer casing.

PREPARATION BEFORE USE

Batteries:

- 2.2 Ensure that the handset battery is new and is inserted correctly.
- 2.3 Dispose of old batteries at an appropriate recycling facility.

When using the handset:

- 2.4 Ensure the handset is pointed at the infrared sensor located behind the flame effect screen at the back of the inside of the appliance.

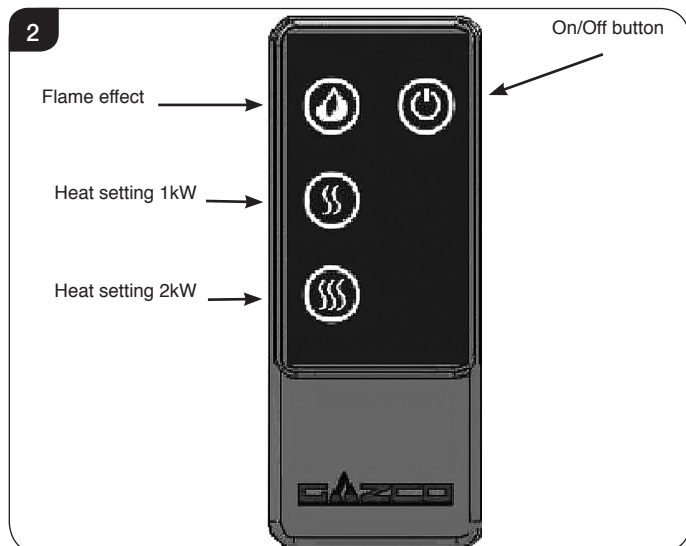
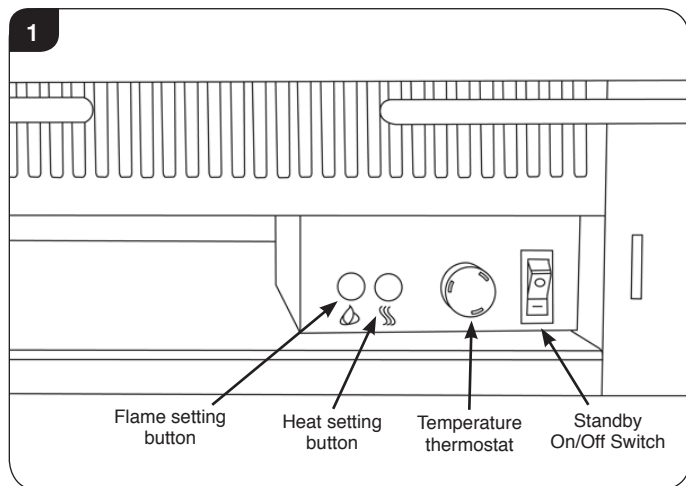
LOCATION OF POWER SWITCH

- 2.5 The mains power switch is located behind the lower plinth, on the control panel located on the right-hand side of the appliance (see Diagram 1 over page).
- 2.6 Switch ON (—) before operating either the remote or manual controls.
- 2.7 A beep is heard to indicate the fire is ready for use.

User Instructions

Remote & Manual Operation

- 2.8 The following functions can be controlled using the manual controls or remote handset:
- Heat settings 1 and 2
 - Brightness of the fuel and flame effect
 - Colour of the flames
- 2.9 The Standby function and the thermostat can only be operated via the manual controls.
- 2.10 The effects can be turned off using the remote, returning the appliance to Standby, see Diagram 1 and 2.



Standby On/Off

- 2.11 The appliance is in Standby mode when the power is switched on via the manual control panel. You must have this power supply ON (—) before using the manual or remote controls.

Turning On the Appliance

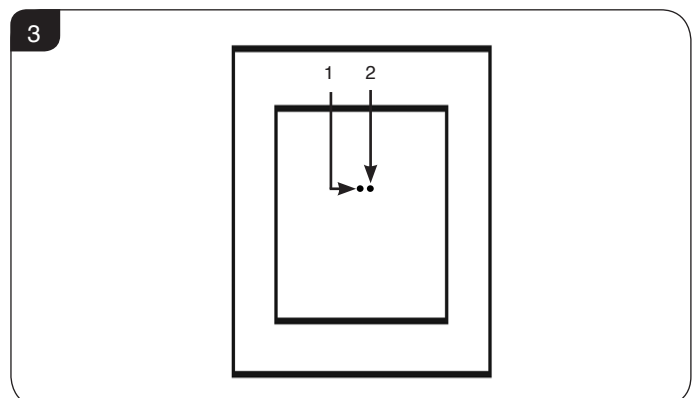
Flame Effects:

- 2.12 The flame effect button on both the manual and remote controls has 4 settings:
- Press **once** for maximum brightness of fuel and flame effects.
 - Press **twice** for medium brightness.
 - Press **three times** for minimum brightness.
 - Press **four times** for maximum brightness of fuel and additional blue flame effects.

1	2	3	4
Maximum	Medium	Minimum	Maximum plus blue flame effects

Turning On the Heat:

- 2.13 **When turning on the heater you must always press the 1kW button. Do not start the fire using the 2kW setting.**
- 2.14 **It is NOT possible to run the heater without the flame effects switched on.**
- 2.15 Press the 1kW button to turn the fan heater ON. One red indicator light will be displayed on the indicator (1) - See Diagram 3. The appliance will blow cold air for approximately 8 seconds before the heater comes on. On this setting the heater will operate at half its maximum temperature.
- 2.16 Press the 2kW button **once** to turn the fan heater to its maximum temperature. Two red indicator lights will be displayed on the indicator (1) + (2) behind the flame effect screen - see Diagram 3. After approximately 8 seconds the heater will operate at its maximum temperature.



- 2.17 **Pressing the 2kW button again will turn the heater OFF and cold air will continue to blow for 8 seconds.**
- 2.18 Press the 1kW button to return to the lower heat setting.
- 2.19 Press the On/Off button to turn off **ALL** settings and return to Standby.
- 2.20 **The appliance should be turned off via the On/Off switch when it is not in use.**

User Instructions

Thermostatic Control

- 2.21 The appliance is fitted with a thermostat. This is located on the control panel of the appliance, see Diagram 1.

The thermostat can control the room temperature between approximately 9°C and 34°C. The edge of the thermostat control dial is numbered 1 - 9 with 1 being the coolest setting and 9 being the warmest. If the room temperature is too high turn the thermostat dial in an anti-clockwise direction. If the room temperature is too low turn the dial in a clockwise direction.

Log Effect

- 2.22 **Log effect appliances have a glass fibre fuel bed which may give off a slight smell when first used. This is normal and should disappear after a day or two.**

Thermal Safety Cut Out

The appliance is fitted with a thermal safety cutout, which operates if it overheats. If this happens:

- 2.22 Unplug the appliance and allow it to cool for 5 - 10 minutes.
- 2.23 Check the air inlets/outlets for any obstruction and clear if necessary, see Section 3.
- 2.24 Plug in appliance and switch it on. The cutout will re-set and the appliance should function correctly. If this is not the case:
- 2.25 Unplug once more and have the fire checked by a competent electrician.

3. Maintenance

- 3.1 **ALWAYS UNPLUG FROM MAINS SUPPLY BEFORE CLEANING OR UNDERTAKING ANY MAINTENANCE**

CLEANING

- 3.2 Only clean the outer casing when it is cold. Do not use abrasive cleaners.

CLEANING AIR INLETS

- 3.3 Ensure the appliance is unplugged.
- 3.4 Clean the air inlet and outlet grilles regularly with a soft cloth or the nozzle of a vacuum cleaner.
- Dust build-up can inhibit efficient performance of the fan and lead to the safety cut-out operating.**
- 3.5 Keep the area around the appliance clean and free of fluff, dust or pet hair.
- 3.6 In particular, build-up of dust etc. can occur around the heater area under the appliance. Take particular care to keep this area free from such particles on a regular basis to prevent build-up.

CLEANING LOG MOULDING

- 3.7 Ensure the appliance is unplugged and cold before handling log moulding.
- 3.8 Follow Sections 4 & 5 to access and remove log moulding.
- 3.9 Dust off any build-up with a brush or damp cloth and replace.

4. Cleaning the Appliance



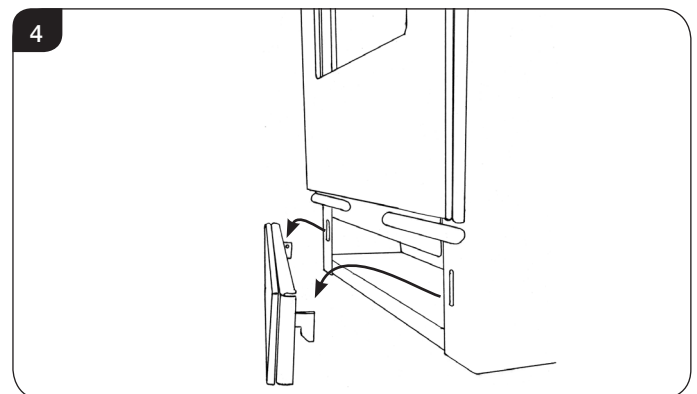
IMPORTANT: THE OUTER PANNELLING OF THE RIVA VISION IS MADE FROM GLASS. USE CAUTION WHEN INSTALLING, REMOVING AND STORING AS THE COMPONENTS ARE FRAGILE AND COULD BREAK UNLESS HANDLED CAREFULLY.

- 4.1 Make sure the fire and surrounds are cool before cleaning. Use a damp cloth for the glass casing.

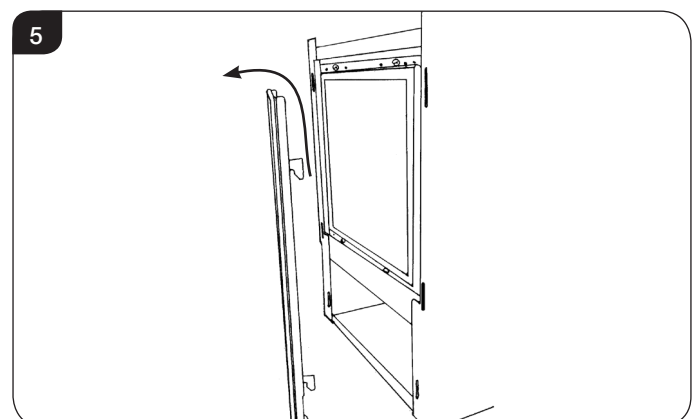
All Models

- 4.2 Remove the glass top and place carefully to one side.
- 4.3 Remove the plinth to access the manual controls by lifting the hooks clear of the slots on the front of the appliance, see Diagram 4.

Heat may remain in the centre of the control cover, hold the sides to remove.

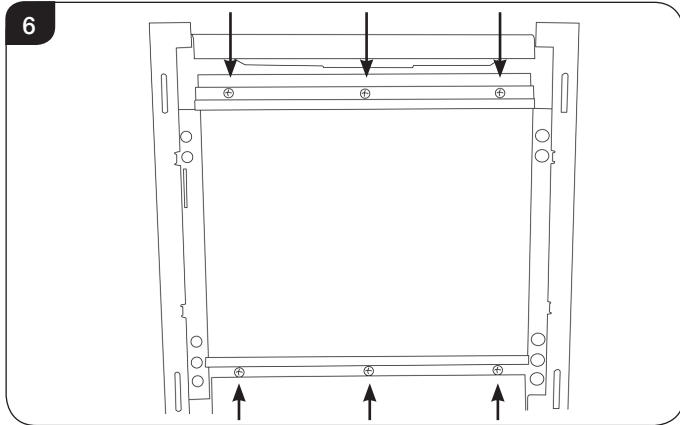


- 4.4 Remove the frame to gain complete access to the control box and the viewing aperture by lifting the hooks clear of the slots on the front of the appliance, see Diagram 5.



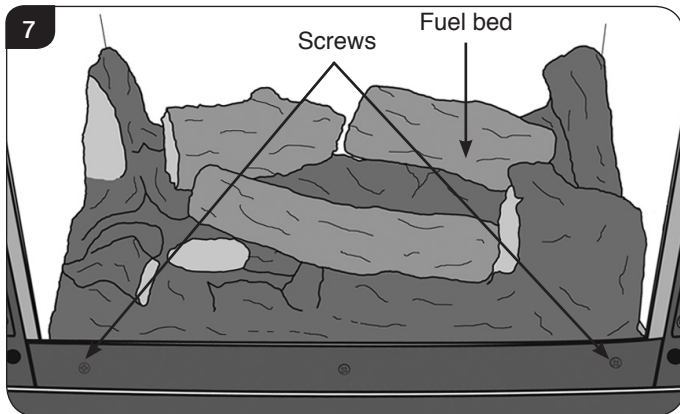
User Instructions

- 4.5 Using screwdriver remove the six screws securing the glass clamps, see Diagram 6.
Remove the top three screws and the upper clamp first.
Take care to support the glass window panel when removing the screws.



5. Removal of the Fuel Bed

Please note: The fuel bed is secured by 2 x screws on the lower panel on the front of the fire.



- 5.1 Lift the fuel bed carefully out through the front of the appliance.

i DO NOT TOUCH THE INTERNAL ELECTRICAL COMPONENTS

- 5.2 Replace in reverse order **taking care not to damage the fragile internal components.**

Installation Instructions

Technical Specification

These instructions cover the following models:

Riva Vision Small	Riva Vision Midi	Riva Vision Medium
634-680	634-733	634-795

These appliances have 3 modes of operation:

- Flame effect only - with brightness and flame colour adjustment
- Flame effect + 1kW heating
- Flame effect + 2kW heating

A 230v 13amp 50Hz supply is required

Maximum power consumption:

Vision Small: 2064 watts

Vision Midi: 2064 watts

Vision Medium: 2064 watts

THIS APPLIANCE MUST BE EARTHED

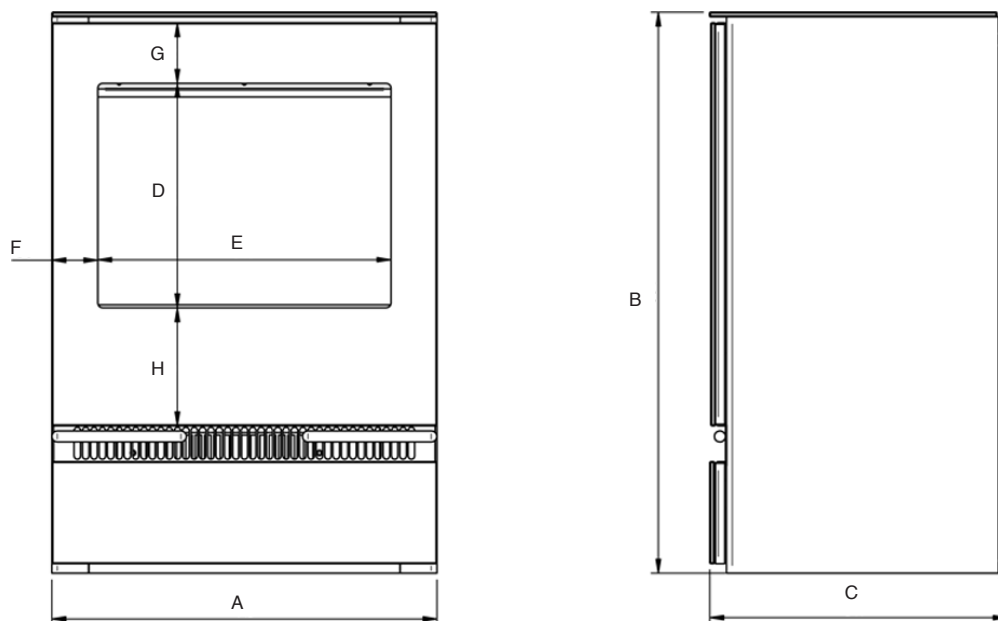
A 1.8 metre lead with plug containing a 13 amp fuse is supplied. Only use a 13 amp fuse with this appliance.

Remote control handset battery (CR2032)

This appliance has been certified for use in countries other than those stated. To install this appliance in these countries, it is essential to obtain the translated instructions and in some cases the appliance will require modification. Contact Gazco for further information.

PACKING CHECKLIST

Appliance Description	Fixing Kit containing:
Riva Vision	1 x Instruction Manual 1 x Handset 1 x Battery



Model	A	B	C	D	E	F	G	H
Riva Vision Small	370	555	299	240	254	58	56	122
Riva Vision Midi	415	604	320	241	316	50	65	127
Riva Vision Medium	535	676	363	274	408	64	77	152

Installation Instructions

1. General

1.1 TOOLS REQUIRED

No tools are required to install this appliance.

1.2 UNPACKING THE FIREPLACE

WARNING! DO NOT use this appliance if any part has been exposed to water.

Immediately call a qualified service technician to inspect and to replace any part of the electrical system if necessary.

1.3 Open the packaging carefully and remove the polystyrene. Remove and discard the plastic bag. Keep plastic wrapping away from children. Be responsible when handling the packing materials.

1.4 Check all parts and accessories are removed before disposing of any packaging. If necessary keep the original packaging for future transport and/or storage.

2. Fitting the Appliance



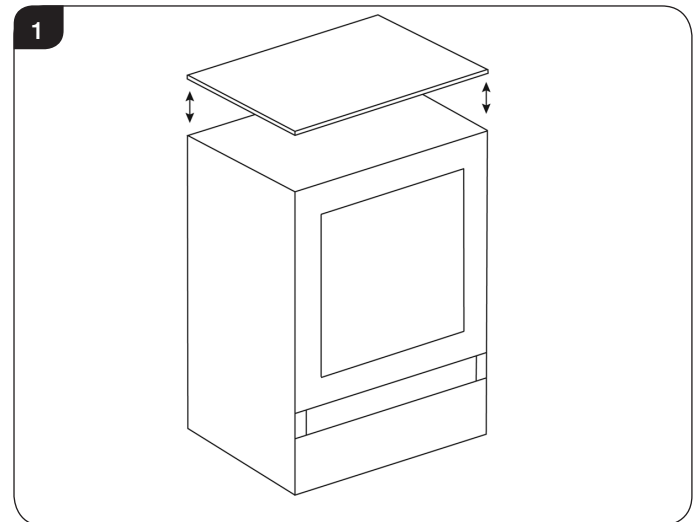
IMPORTANT: THE OUTER PANELLING OF THE RIVA VISION IS MADE FROM GLASS. USE CAUTION WHEN INSTALLING, REMOVING AND STORING AS THE COMPONENTS ARE FRAGILE AND COULD BREAK UNLESS HANDLED CAREFULLY.

This appliance is heavy and will not require anchoring to the hearth or floor.

- 2.1 Position the appliance ensuring all appropriate clearances are observed.
- 2.2 This appliance must stand on a clean, level, firm surface. Do not stand the fire on a carpet. Ensure that furniture, curtains etc. are positioned no closer than 1m and the fire stands on a surface that can withstand temperatures of 90°C for prolonged periods. Do not allow rugs to be placed within 500mm of the front of the appliance.
- 2.3 Connect to the mains via the power socket.

3. Fitting the Top Plate

- 3.1 To fit the top, line up the raised fins on the underside of the glass plate with the cut outs in the top of the box. When properly fitted the rear of the glass plate should sit flush with the rear of the appliance, see Diagram 1.



Servicing Instructions

1. Fault Finding

No illumination or uneven lighting:

- 1.1 Check the heater is working. If YES, one or more of the LED boards will need replacing. This must be undertaken by a suitably qualified person (see Servicing Requirements).
- 1.2 If NO, first change the 13amp fuse for one known to work. If the fire still does not work, check the socket by plugging in a working appliance. If this too fails to operate, call in a competent electrician to check the socket.

Illumination but no heat:

- 1.3 The safety cut-out has operated to protect against overheating (see User Instructions, Section 2). Ensure the air inlet and outlet grilles are free of dust or any other obstruction.
- 1.4 The thermostat control dial may be set too low. Turn the dial clockwise until the heater turns on.

Remote control fails to work:

- 1.5 Check that the batteries are new and correctly fitted. Replace if necessary.
- 1.6 Ensure that the handset is pointed towards the fire.

2. How to wire a plug

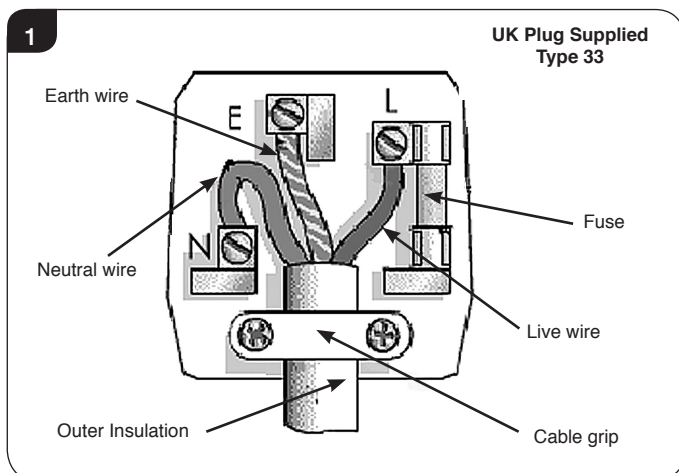
To change the plug supplied with this fire, follow the instructions below. The instructions assume that the wire has been cut.



WARNING – FAILURE TO CONNECT THE WIRES CORRECTLY COULD PUT PEOPLE AT RISK FROM ELECTRIC SHOCK OR FIRE. IF IN DOUBT CONSULT A QUALIFIED ELECTRICIAN.

UK Plug

Suitable for use in Cyprus, Malta, Ireland & Great Britain

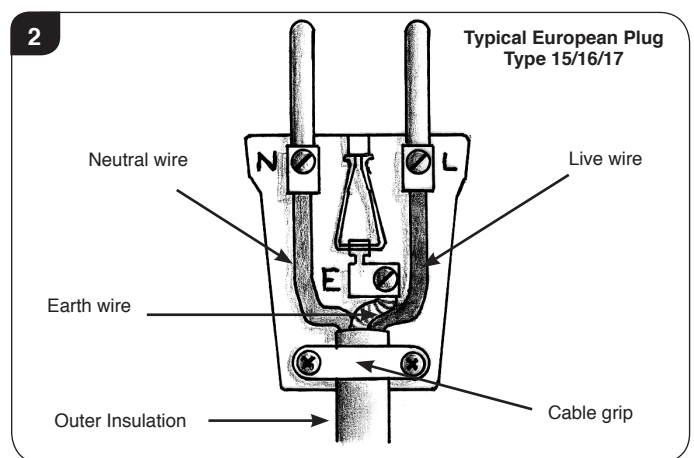


Live Wire	Brown	Terminal L / RED
Neutral Wire	Blue	Terminal N / BLACK
Earth Wire	Green & Yellow Stripes	Terminal E / / GREEN or GREEN & YELLOW

THIS APPLIANCE MUST BE EARTHED

European Plug

Suitable for use in Austria, Belgium, Bulgaria, Czech Republic, Denmark, Estonia, Finland, France, Greece, Hungary, Germany, Italy, Latvia, Lithuania, Luxembourg, Netherlands, Poland, Portugal, Romania, Slovakia, Slovenia, Spain & Sweden



- 2.1 Dispose of the old plug safely. Ensure the new plug is not cracked or chipped.
- 2.2 Expose 4cm of the coloured wires and trim to the correct lengths so that they comfortably reach the correct terminals.
- 2.3 Ensure that the Earth wire has more slack than any of the other wires.
- 2.4 Remove some of the insulation to leave about 1cm of exposed metal core on each wire.
- 2.5 Twist the strands of the wire together.
- 2.6 Loosen the screw heads above each terminal.
- 2.7 Push the metal wire into the hole beneath each screw head or, dependent on plug design, wind the metal wire around the screw.
- 2.8 Ensure that the insulation reaches right up to each terminal as illustrated and there are no loose strands of wire.
- 2.9 Ensure the cable sits correctly under the cable grip and tighten to secure.
- 2.10 Refer to *Technical Specification* for fuse rating and fit the appropriate fuse into the plug.
- 2.11 Attach the plug cover.

Servicing Instructions

3. Servicing Requirements

THIS APPLIANCE MUST ONLY BE SERVICED BY A SUITABLY QUALIFIED PERSON.

BEFORE UNDERTAKING ANY WORK ON THE APPLIANCE: SWITCH OFF THE APPLIANCE AND ISOLATE IT FROM THE MAINS BY UNPLUGGING THE UNIT.

- 3.1 Wait for at least 10 minutes until the appliance has cooled down.

Remote Handset Battery Replacement

- 3.2 Replace with a CR2032 battery. Make sure the battery is installed correctly in the remote control.

Maintenance of Motors

- 3.3 The motors used on the fan and flame effect are pre-lubricated for extended bearing life and require no further lubrication. However, periodic cleaning/vacuuming of the fan/heater unit is recommended.

Resetting the Thermal Cutout Switch

- 3.4 The appliance is fitted with an Electronic Safety Control (E.S.). This is a safety device which switches off the fire if, the appliance overheats for any reason e.g. when covered.

If the heater stops operating whilst the flame effect continues normally, this indicates that the E.S. Control is in operation.

The E.S. Control can only be re-set after the appliance has cooled down.

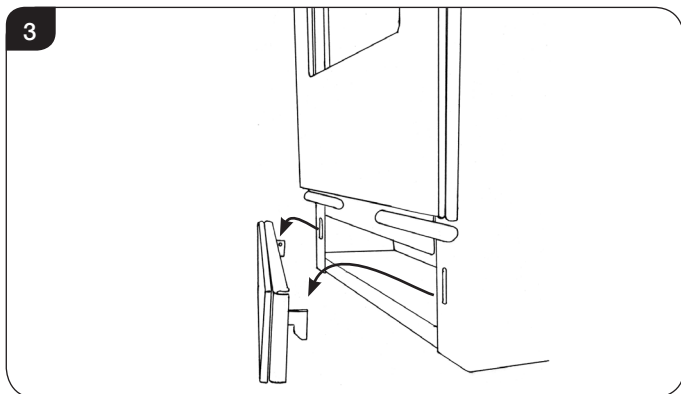
To re-set the E.S.:

Switch off the appliance (Manual On/Off switch) and leave for approximately 10-15 minutes. Remove any obstruction to the fan heater outlet or other internal parts.

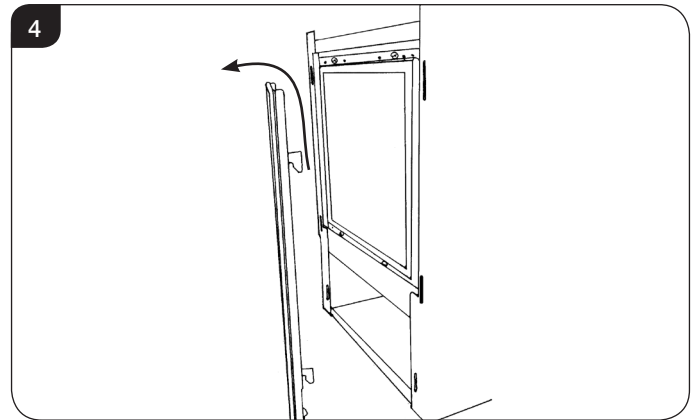
Switch on appliance and the E.S. Control will re-set. Ensure that the appliance is functioning correctly. If the E.S. Control operates again, the appliance should be checked by a competent Electrician.

- 3.5 Remove the glass top and place carefully to one side.

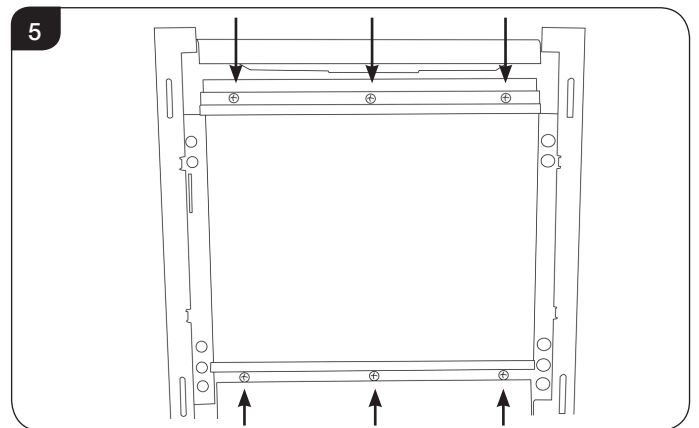
- 3.6 Remove the plinth to access the manual controls by lifting the hooks clear of the slots on the front of the appliance, see Diagram 3.



- 3.7 Remove the frame to gain complete access to the engine and the viewing aperture by lifting the hooks clear of the slots on the front of the appliance, see Diagram 4.



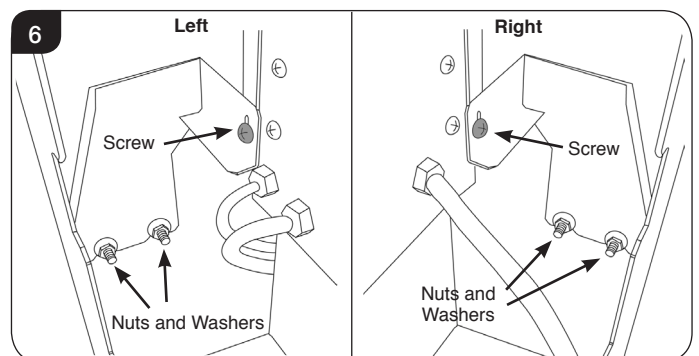
- 3.8 Using screwdriver remove the six screws securing the glass clamps, see Diagram 5. Remove the top three screws and the upper clamp first. **Take care to support the glass window panel when removing the screws.**



4. Removal of the Engine

In order to service this appliance it is necessary to remove the engine from the outer casing.

- 4.1 Using an 8mm socket remove the 4 nuts and washers from either side of the brackets at the back of the appliance, see Diagram 6.
- 4.2 Undo the 2 screws (Small and Medium models), 4 screws (Midi model) holding the bracket to the back of the engine, see Diagram 6.

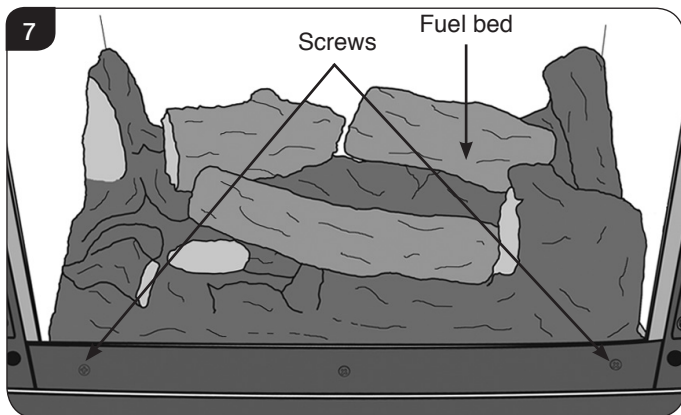


Servicing Instructions

- 4.3 Remove the 2 brackets.
- 4.4 Carefully lift and twist to remove the engine from the front of the casing.

5. Removal of the Fuel Bed

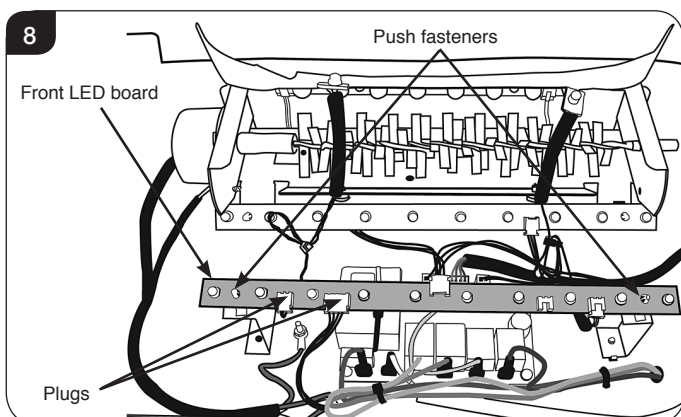
Please note: The fuel bed is secured by 2 x screws on the lower panel on the front of the fire, see Diagram 7.



- 5.1 Lift the fuel bed carefully out through the front of the appliance.

6. Replacing Front LED Board

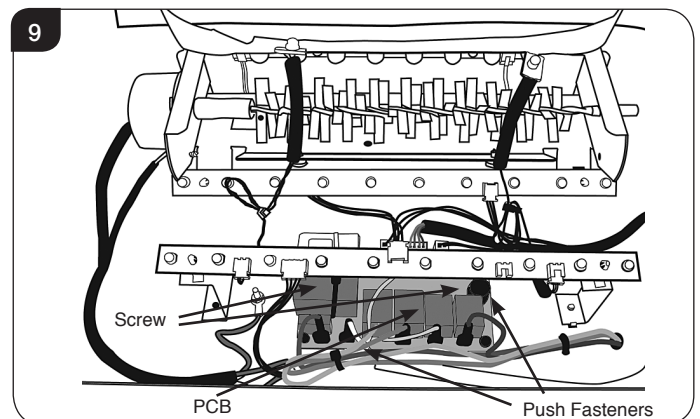
- 6.1 If an LED fails to light you will notice an uneven or unlit fuel effect. To replace the front LED board (for middle and rear boards see sections 9 & 10):
- 6.2 Disconnect all wires from the front LED board, noting their orientation.
- 6.3 The board is secured by 2 x plastic push fasteners, see Diagram 8. Using pliers, gently squeeze the head of the fasteners to release the board.



- 6.4 Dispose of the board at an appropriate recycling centre.
- 6.5 To connect the new LED board push the fasteners through the ready drilled holes and ensure that all wires are correctly connected.

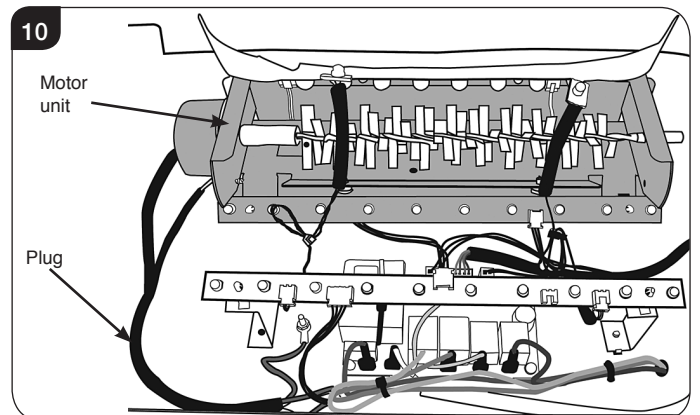
7. Replacing the Printed Circuit Board

- 7.1 To remove the PCB first remove the front LED board, see Section 6.
- 7.2 The PCB is fixed to the base of the appliance using 2 x push fasteners and 2 x screws, see Diagram 9. Release board from fasteners and remove screws.



- 7.3 The wires should now be disconnected from the PCB one by one. As each wire is disconnected from the old PCB attach it to the new PCB to ensure correct orientation.
- 7.4 Fix the new PCB to the base of the appliance using the 2 x push fasteners and 2 x screws.

8. Replacing the Motor & Effects Unit



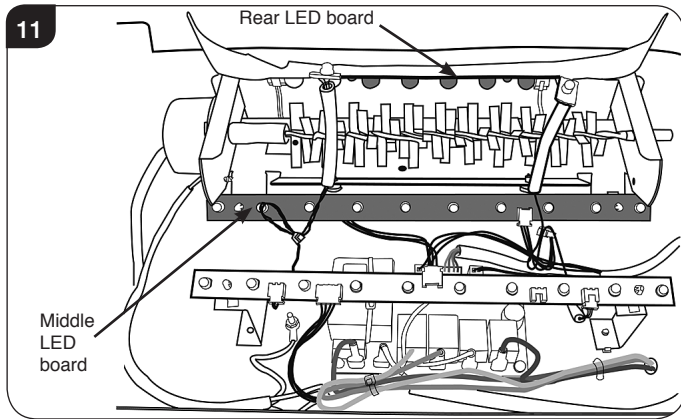
- 8.1 The motor & effects unit is attached by 4 x screws located at the rear of the appliance. Remove the 4 screws on the lower rear casing.
- Note: There are 2 x gaskets between the unit and the appliance. Remove and keep in a safe place.**
- 8.2 Disconnect the 2 x wires connecting the 2 x 'flying' LEDs to the front LED board, noting their orientation.
 - 8.3 Lift and rotate the motor unit to give access to the rear LED board.
 - 8.4 Disconnect both wires from the rear LED board, noting their orientation.

Servicing Instructions

- 8.5 Unplug the cables connecting the motor unit and the PCB.
- 8.6 The motor and effects unit can now be removed and replaced as a whole unit.
- 8.7 Replace in reverse order. Ensure to replace gaskets when reattaching motor to appliance body and that all wires are correctly connected.

9. Replacing the Middle LED Board

The middle LED board is attached to the motor unit but can be replaced individually, see Diagram 11.



- 9.1 The PCB is fixed to the base of the appliance using 2 x push fasteners and 2 x screws. Release board from fasteners and remove screws.
- 9.2 Disconnect the wire connecting the middle LED board to the rear LED board, noting its orientation.
- 9.3 Attach the new board and reconnect the wire.
- 9.4 Fix the new PCB to the base of the appliance using the 2 x push fasteners and 2 x screws.

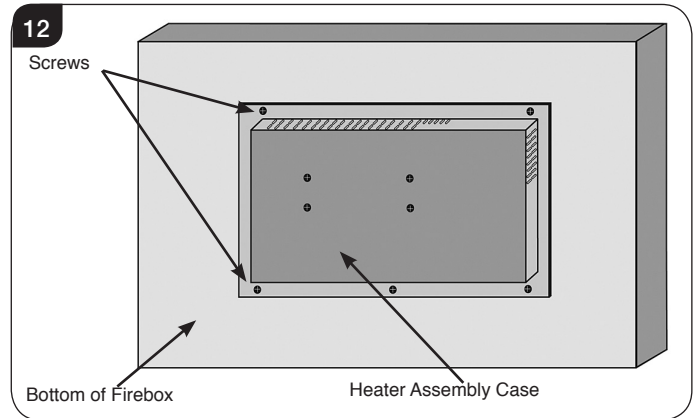
10. Replacing the Rear LED Board

The rear LED board is attached to the motor unit but can be replaced individually, see Diagram 11.

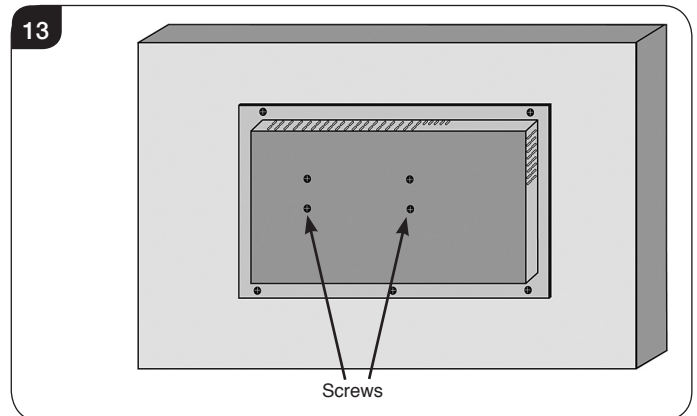
- 10.1 Remove the motor unit, see 8.1 - 8.4 (it is not necessary to disconnect the motor unit from the PCB) and rotate to access the rear LED board.
- 10.2 Release the board by removing the 2 x screws at either end of it.
- 10.3 Disconnect the wire connecting the rear LED board to the front LED board, noting its orientation.
- 10.4 Attach the new board using the 2 x screws and reconnect the wire.
- 10.5 Replace motor and effects unit, see Section 8. Ensure to replace gaskets when reattaching motor to appliance body and that all wires are correctly connected.

11. Replacing the Heater Assembly

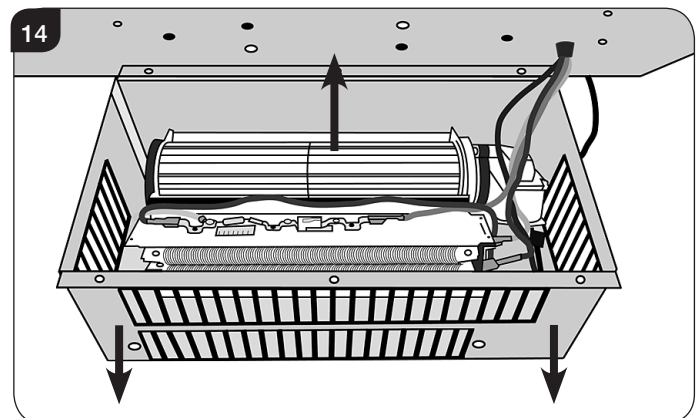
- 11.1 To access the heater assembly remove any loose top plates or panels before moving the appliance and carefully lay the appliance on its back.
- 11.2 Remove the 5 x screws securing the heater casing to the bottom of the firebox, see Diagram 12.



- 11.3 Remove the 4 x screws from the front of the heater casing, see Diagram 13, to free the heater assembly.

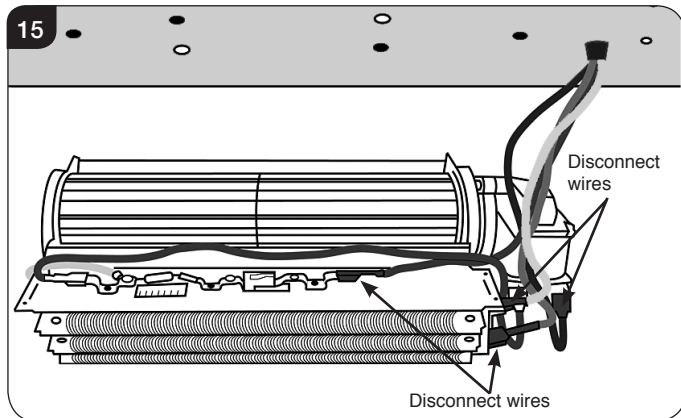


- 11.4 Tilt the heater casing forward and carefully remove the heater assembly, see Diagram 14.



Servicing Instructions

- 11.5 Disconnect the 4 x coloured wires running from the firebox to the heater assembly, see Diagram 15, noting their orientation.



- 11.6 Fit new heater assembly, ensuring all wires are correctly attached and the heater is secured to its casing using 4 x screws.
- 11.7 Reattach heater casing to bottom of firebox using 5 x screws.
- 11.8 Relocate the appliance to its original position and replace any loose top plates or panels.

Spare Parts List

Model	Riva Vision Small	Riva Vision Midi	Riva Vision Medium
Parts Description	Part No.		
Log Fuel Effect	PL0116	PL0117	PL0118
Handset	EL0491		
Battery	EL0492		
PCB Unit	EL0493		
Front LED Board	EL0494		
Middle LED Board	EL0496		
Rear LED Board	EL0498		
Motor & Effect Assembly	EL0495		
Heater Assembly	EL0497		

Gazco Limited, Osprey Road, Sowton Industrial Estate, Exeter, Devon, England EX2 7JG
Technical Customer Services (01392) 261950 Fax: (01392) 261951
E-mail: technicalservices@gazco.com

A member of the Stovax Group
E & O E